

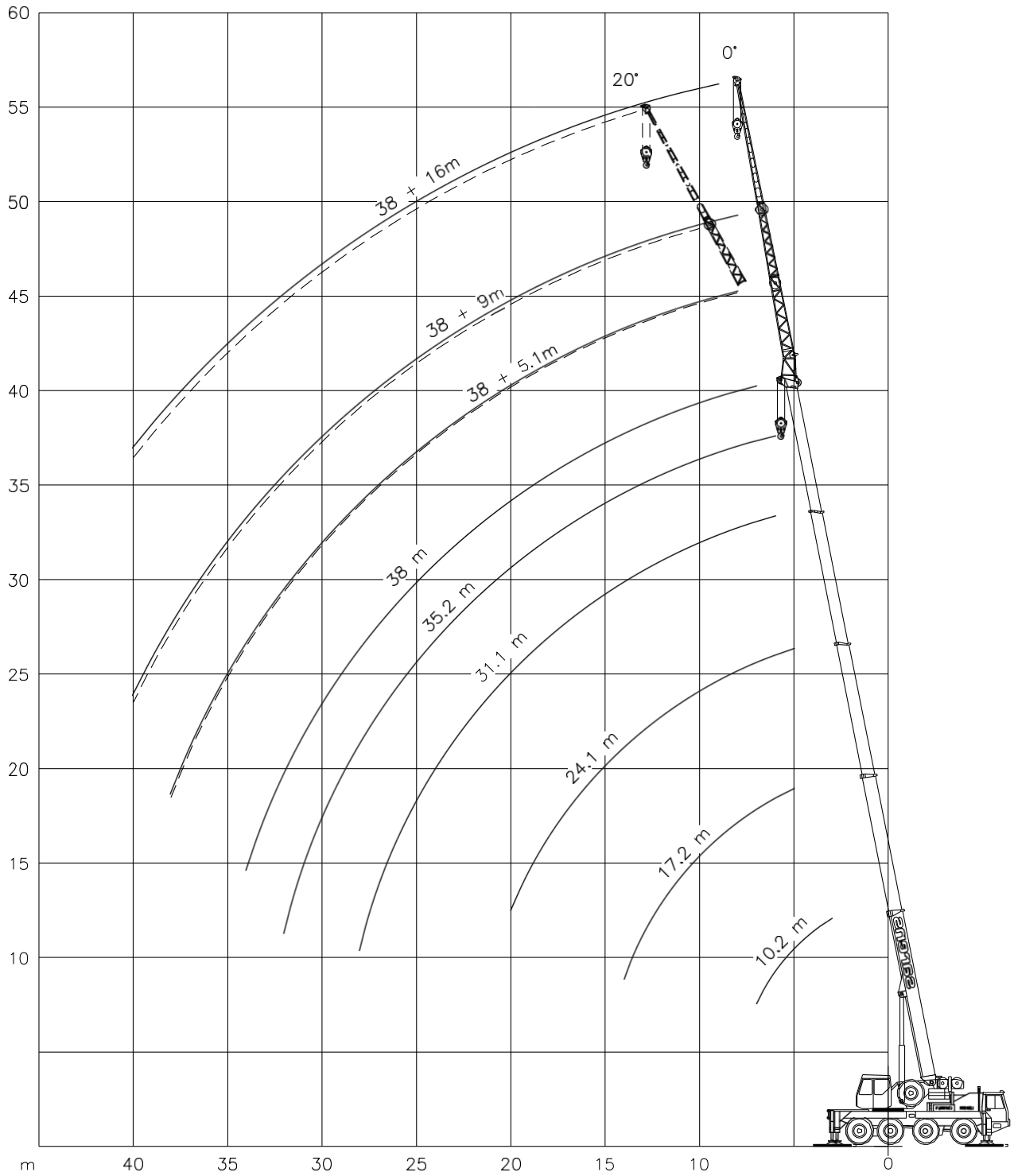




# LIEBHERR LTM 1050-4

50 / 60 TON

## Working ranges

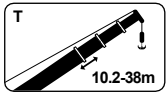




# LIEBHERR LTM 1050-4

# 50 / 60 TON

## Lifting capacities

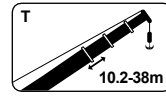


T



DIN  
ISO

75%



T

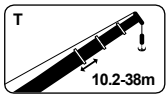


DIN  
ISO

75%

m	7.3 t Counterweight					
	10.2 m	17.1 m	24.1 m	31.1 m	35.2 m	38.0 m
3.0	50.0	-	-	-	-	-
3.5	46.0	-	-	-	-	-
4.0	43.0	-	-	-	-	-
4.5	38.5	-	-	-	-	-
5.0	34.5	28.0	18.7	-	-	-
6.0	28.8	25.0	18.3	10.8	8.7	-
7.0	25.0	22.5	17.5	10.7	8.6	7.5
8.0	-	20.1	16.5	10.6	8.5	7.4
9.0	-	18.2	15.4	10.3	8.4	7.3
10.0	-	15.3	14.4	9.9	8.3	7.2
12.0	-	11.4	11.1	8.9	7.9	6.9
14.0	-	8.9	8.6	8.1	7.3	6.4
16.0	-	-	6.9	6.9	6.7	5.7
18.0	-	-	5.6	5.7	5.6	5.2
20.0	-	-	4.6	4.6	4.6	4.4
22.0	-	-	-	3.8	3.8	3.6
24.0	-	-	-	3.1	3.2	3.0
26.0	-	-	-	2.5	2.6	2.5
28.0	-	-	-	2.1	2.1	2.1
30.0	-	-	-	-	1.7	1.7
32.0	-	-	-	-	1.4	1.4
34.0	-	-	-	-	-	1.1

m	4.1 t Counterweight					
	10.2 m	17.1 m	24.1 m	31.1 m	35.2 m	38.0 m
50.0	-	-	-	-	-	-
46.0	-	-	-	-	-	-
43.0	-	-	-	-	-	-
38.5	-	-	-	-	-	-
34.5	28.0	18.7	-	-	-	-
28.8	25.0	18.3	10.8	8.7	-	-
24.1	21.7	17.5	10.7	8.6	7.5	-
-	20.0	16.5	10.6	8.5	7.4	-
-	16.7	15.1	10.3	8.4	7.3	-
-	14.0	13.1	9.9	8.3	7.2	-
-	10.4	10.0	8.9	7.9	6.9	-
-	7.9	7.5	7.6	7.3	6.3	-
-	-	5.8	6.0	5.9	5.7	-
-	-	4.6	4.7	4.7	4.6	-
-	-	3.6	3.7	3.7	3.7	-
-	-	-	3.0	3.0	3.0	-
-	-	-	2.3	2.3	2.4	-
-	-	-	1.8	1.8	1.9	-
-	-	-	1.4	1.4	1.4	-
-	-	-	-	1.1	1.1	-
-	-	-	-	0.8	0.8	-

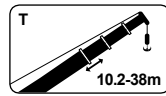


T



DIN  
ISO

75%



T



DIN  
ISO

75%

m	7.3 t Counterweight					
	10.2 m	17.1 m	24.1 m	31.1 m	35.2 m	38.0 m
3.0	44.5	-	-	-	-	-
3.5	40.0	-	-	-	-	-
4.0	36.5	-	-	-	-	-
4.5	33.5	-	-	-	-	-
5.0	30.0	23.5	18.7	-	-	-
6.0	22.7	20.0	17.4	10.8	8.7	-
7.0	16.9	16.6	14.3	10.7	8.6	7.5
8.0	-	13.8	11.9	10.6	8.5	7.4
9.0	-	11.6	10.2	9.4	8.4	7.3
10.0	-	9.7	8.7	8.1	7.7	7.2
12.0	-	7.1	6.6	6.2	5.9	5.8
14.0	-	5.5	5.2	4.8	4.6	4.5
16.0	-	-	4.0	3.8	3.6	3.6
18.0	-	-	3.1	3.0	2.9	2.8
20.0	-	-	2.4	2.4	2.3	2.2
22.0	-	-	-	1.8	1.8	1.7
24.0	-	-	-	1.3	1.3	1.3
26.0	-	-	-	1.0	1.0	0.9
28.0	-	-	-	0.7	0.7	0.7

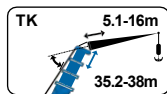
m	4.1 t Counterweight					
	10.2 m	17.1 m	24.1 m	31.1 m	35.2 m	38.0 m
44.0	-	-	-	-	-	-
40.0	-	-	-	-	-	-
36.5	-	-	-	-	-	-
31.5	-	-	-	-	-	-
27.0	20.5	18.7	-	-	-	-
20.1	18.0	15.3	10.8	8.7	-	-
14.9	14.6	12.5	10.7	8.6	7.5	-
-	12.1	10.4	9.5	8.5	7.4	-
-	10.2	8.8	8.1	7.6	7.3	-
-	8.5	7.5	6.9	6.6	6.4	-
-	6.2	5.6	5.2	5.0	4.9	-
-	4.7	4.3	4.0	3.8	3.7	-
-	-	3.3	3.1	2.9	2.9	-
-	-	2.4	2.3	2.2	2.2	-
-	-	1.8	1.8	1.7	1.6	-
-	-	-	1.3	1.2	1.2	-
-	-	-	0.9	0.9	0.8	-



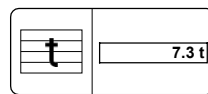
# LIEBHERR LTM 1050-4

# 50 / 60 TON

## Lifting capacities



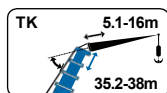
TK



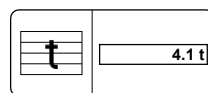
DIN  
ISO

75%

m	35.2 m						38.0 m					
	5.1 m		9.0 m		16.0 m		5.1 m		9.0 m		16.0 m	
	0°	20°	0°	20°	0°	20°	0°	20°	0°	20°	0°	20°
	t	t	t	t	t	t	t	t	t	t	t	t
8.0	6.30	4.50	5.00	-	-	-	5.10	4.00	4.00	-	-	-
9.0	6.30	4.40	5.00	-	3.00	-	5.10	3.90	3.95	-	2.00	-
10.0	6.30	4.25	5.00	3.60	2.90	-	5.10	3.80	3.92	3.00	2.00	-
12.0	6.30	4.00	4.90	3.45	2.70	1.80	5.10	3.65	3.90	2.80	2.00	1.75
14.0	6.10	3.75	4.70	3.30	2.55	1.72	5.00	3.50	3.85	2.65	1.98	1.72
16.0	5.70	3.50	4.40	3.20	2.40	1.65	4.70	3.30	3.75	2.50	1.96	1.70
18.0	5.15	3.25	4.10	3.05	2.20	1.57	4.25	3.10	3.50	2.35	1.93	1.65
20.0	4.50	3.00	3.90	2.95	2.05	1.52	3.90	2.95	3.25	2.25	1.90	1.60
22.0	3.75	2.85	3.70	2.90	1.90	1.46	3.50	2.75	3.05	2.10	1.85	1.55
24.0	3.10	2.65	3.15	2.80	1.80	1.42	2.90	2.60	2.85	2.00	1.80	1.50
26.0	2.60	2.50	2.65	2.70	1.70	1.40	2.40	2.40	2.45	1.90	1.70	1.45
28.0	2.20	2.30	2.25	2.45	1.60	1.35	2.00	2.10	2.05	1.80	1.65	1.42
30.0	1.85	1.90	1.90	2.05	1.55	1.30	1.70	1.80	1.75	1.75	1.60	1.40
32.0	1.50	1.55	1.60	1.70	1.50	1.25	1.40	1.50	1.45	1.60	1.45	1.37
34.0	1.20	1.25	1.30	1.45	1.45	1.22	1.15	1.25	1.20	1.30	1.30	1.34
36.0	0.95	1.00	1.05	1.15	1.20	1.18	0.90	0.95	0.95	1.05	1.05	1.30
38.0	-	-	0.85	0.90	1.00	1.15	0.70	0.70	0.80	0.85	0.85	1.10
40.0	-	-	0.65	0.65	0.85	1.00	-	-	0.60	0.65	0.70	0.90



TK

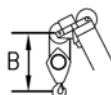


DIN  
ISO

75%

m	35.2 m						38.0 m					
	5.1 m		9.0 m		16.0 m		5.1 m		9.0 m		16.0 m	
	0°	20°	0°	20°	0°	20°	0°	20°	0°	20°	0°	20°
	t	t	t	t	t	t	t	t	t	t	t	t
8.0	6.30	4.50	5.00	-	-	-	5.10	4.00	4.00	-	-	-
9.0	6.30	4.40	5.00	-	3.00	-	5.10	3.90	3.95	-	2.00	-
10.0	6.30	4.25	5.00	3.60	2.90	-	5.10	3.80	3.92	3.00	2.00	-
12.0	6.30	4.00	4.90	3.45	2.70	1.80	5.10	3.65	3.90	2.80	2.00	1.75
14.0	6.10	3.75	4.70	3.30	2.55	1.72	5.00	3.50	3.85	2.65	1.98	1.72
16.0	5.70	3.50	4.40	3.20	2.40	1.65	4.70	3.30	3.75	2.50	1.96	1.70
18.0	4.70	3.25	4.10	3.05	2.20	1.57	4.25	3.10	3.50	2.35	1.93	1.65
20.0	3.80	3.00	3.90	2.95	2.05	1.52	3.55	2.95	3.25	2.25	1.90	1.60
22.0	3.10	2.85	3.20	2.90	1.90	1.46	2.90	2.75	2.95	2.10	1.85	1.55
24.0	2.50	2.65	2.65	2.80	1.80	1.42	2.40	2.50	2.40	2.00	1.80	1.50
26.0	1.95	2.10	2.10	2.35	1.70	1.40	1.95	2.05	2.00	1.90	1.70	1.45
28.0	1.55	1.65	1.65	1.90	1.60	1.35	1.50	1.65	1.65	1.80	1.65	1.42
30.0	1.15	1.25	1.30	1.50	1.55	1.30	1.15	1.25	1.30	1.50	1.45	1.40
32.0	0.85	0.95	1.00	1.15	1.25	1.25	0.80	0.95	0.95	1.15	1.15	1.37
34.0	0.60	0.65	0.70	0.85	0.95	1.22	0.65	0.65	0.70	0.85	0.95	1.22
36.0	-	-	-	-	0.70	1.00	-	-	-	-	0.70	1.00
38.0	-	-	-	-	-	0.70	-	-	-	-	-	0.70

## Hook Block / Crane hook



Capacity	Number of sheaves	Number of lines	Weight	"B"
SWL 50.0 t	5	11	530 kg	2.0 m
SWL 30.0 t	3	7	260 kg	2.0 m
SWL 12.5 t	1	3	180 kg	2.0 m
SWL 4.5 t	-	1	110 kg	1.8 m

45kN

Ø17mm

L = 160m



V.2011-10-24